

How to access Google Classroom

- 1) The website is <https://classroom.google.com> or search **Google Classroom**
- 2) On the Google Classroom site click '**Go to Classroom**'

Manage teaching and learning with Classroom

Classroom helps students and teachers organize assignments, boost collaboration, and foster better communication.

[Go to Classroom](#)

- 3) At the usual Google login page enter the Google Classroom username (on reverse) with the suffix **@apps.eleanorpalmer.camden.sch.uk** and passwords (on reverse) in order to log in.



Under email enter the given

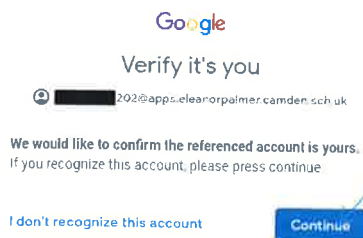
username@apps.eleanorpalmer.camden.sch.uk

and then click **Next**

- 4) On the LGfL screen enter the username again (without the @suffix) and password.



- 5) Verify your account by accepting or continuing. Click to Accept at the Welcome page.



- 6) Welcome to Google Classroom! Click continue and then click **+** icon on top right and enter your classroom code (on reverse) to join your class!



+

Create or join your first class!

Home Learning online support for

Listed below are passwords for the various sites children can access for all home learning.

Every child will have access to Google Classroom and this will be our main platform and link from teachers to children. Instructions on how to access this site are on the reverse. Many older children have been logging on themselves today. These steps are only required on the first login.

Other sites with your child's personalised login are listed below. To note that you may not have logins for every site as some are age specific.

Do get in touch with the school office tomorrow if you are struggling to setup or having problems with passwords.

GOOGLE CLASSROOM

USERNAME	PASSWORD	FORM CODE	COACH MARTIN CODE	MISS FROOD MATHS CODE

SPAG

SPAG USERNAME	SPAG PASSWORD

PURPLEMASH

PURPLEMASH USERNAME	PURPLEMASH PASSWORD

ESPRESSO

ESPRESSO USERNAME	ESPRESSO PASSWORD

TIMES TABLE ROCKSTAR

TIMES TABLE ROCKSTAR USERNAME	TIMESTABLE ROCKSTAR PASSWORD

NUMBERBOTS

NUMBERBOTS USERNAME	NUMBERBOTS PASSWORD